

## World's Largest Collection Help



### Essential Information.

#### **Main Menus and Buttons:**

File

Categories

Options

Search

Documents

Run from CD

Copy/Run

#### **Troubleshooting**

It is highly recommended that you back up (make copies of) your AUTOEXEC.BAT, CONFIG.SYS and the following files in your Windows directory:

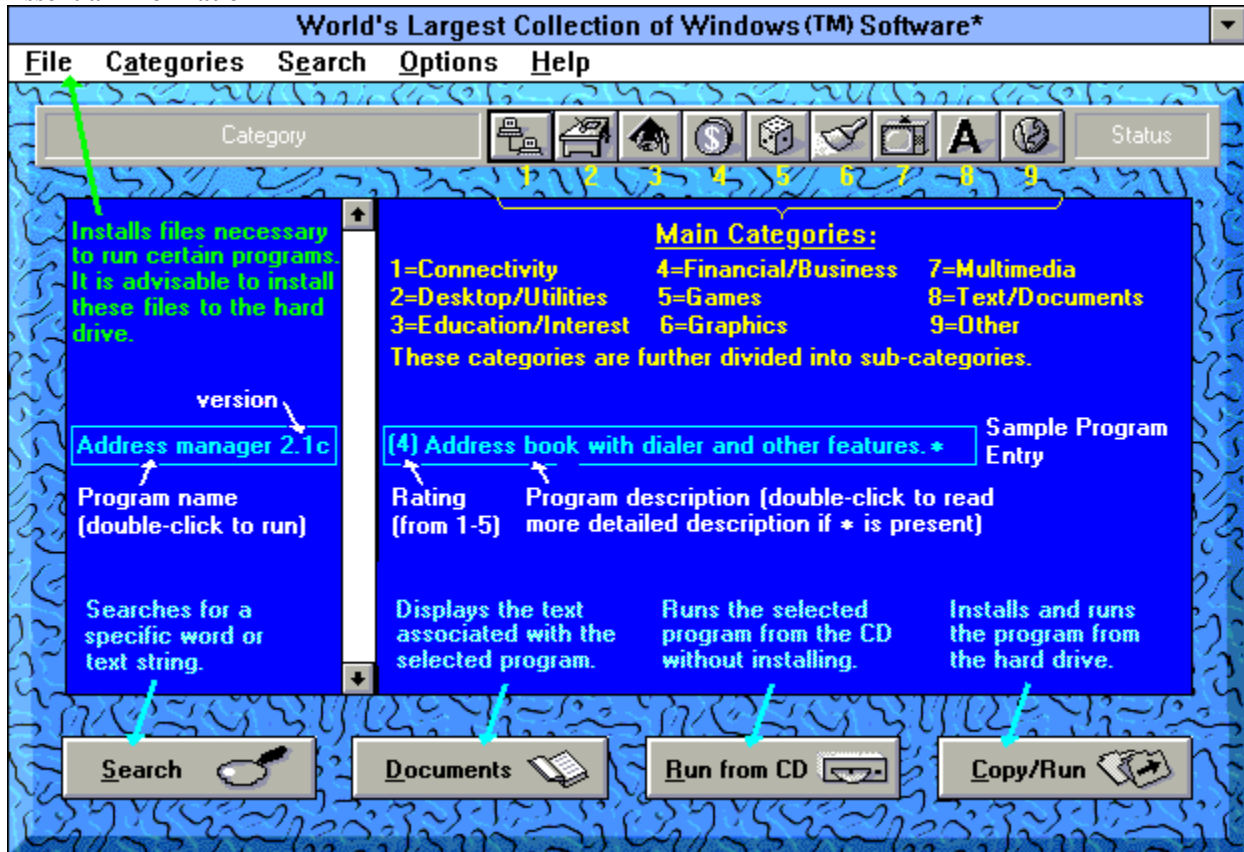
WIN.INI

SYSTEM.INI

CONTROL.INI

**before** you start installing programs, and make additional backups on a regular basis. In most cases, when a program creates a problem in your version of Windows it can be reversed by restoring (copying back) these files.

## Essential Information



Program names and version numbers (for most entries) are listed on the left side of the vertical scroll bar.

- If the **Run from CD** button is enabled, you can try to run the program from the CD-ROM by double clicking on the program name. If the item does not include an executable file, the **View/Hear Files** dialog will open, allowing you to review the contents.

- If the **Run from CD** button is disabled (grayed out) you can open the **Run/Copy** dialog by double clicking on the program name.

Ratings from 1 - 5 (with 5 being the best) and descriptions are listed on the right side of the vertical scroll bar. If the description ends with an asterisk and the correct CD-ROM is in the drive, you can double click on the description to view an additional description (FileID.diz) file.

## **File Menu**

The options under the file menu are INSTALL and EXIT.

The install section includes files that must be installed to your hard drive in order that certain programs are able to run. These files need only be installed once, (unless they are overwritten by an older file):







**BWCC.DLL:** This file is necessary to run a program which uses the Borland library, and when installed, is located in the /Windows directory.

**VBRUN DLL Files:** These files are necessary to run programs which use the Visual Basic library, and are located in the /Windows directory once copied. If these files are not present on your system and you try to run a program, you may encounter a *Cannot find Vbrun300.dll* or a similar error message.

**Video For Windows:** These files allow Windows to run AVI files and display full-motion video and sound. (See the Mulimedia Category). The files will be copied to your Windows System directory.

## Categories Menu and Toolbar

The main categories and sub-categories in the menu are as follows:

- **Connectivity** [Internet/Other]
- **Desktop/Utilities** [Accessories/Controls/Diagnostics/File Management/Icons/Enhancements]
-  **Education/Interest** [Arts/Computer/Food, Health/Hobbies/Science, Math/Other]
-  **Financial/Business** [Calculators/Mail/Organizers, Planners/Other]
-  **Games** [Arcade, Video/Board/Card/Memory, Logic/Other]
-  **Graphics** [Files/Screen Savers/Tools/Other]
-  **Multimedia** [Animation/Sound/Tools/Video]
- **Text/Documents** [Fonts/Help Files/Macros, Add On`s/Printer/Other]
-  **Other**

These categories are available from either the horizontal menu bar or from the iconized toolbar.

When a category is selected, all included programs are listed. The program names are on the left of the vertical scroll bar and the ratings (out of five) and descriptions are on the right.

## **Options Menu**

When checked, the **Date/Time** option displays the current date and time, in alternation, above the **Search** button.

When the **Open/Close Effects** is checked some windows open and close in an animated manner. Additional messages also appear, in alternation, below the program description list.

NOTE: Changes to the above settings are saved between sessions.

The **View Catalog** option opens up and exhibits Microforum`s interactive CD catalog.

## Search Menu and Button



This feature allows you to search for a given word or text on the entire list of names and descriptions.

For example, if you wanted to search for the word *calendar*, you would click on the **Search** button shown above (or you can click on the top horizontal menu labeled **Search>>Find** or just press the **F2** hot-key) and type *calendar*, and then press Enter or click on **Search**. The World's Largest Collection does not differentiate between capital and small case letters.

HINT: To find the greatest number of occurrences, use the shortest form or the root of the desired word.  
To find only a specific word, place a space before and/or after the word.

If the **List all matches** option is selected (default), all of the entries which contain the specified text will be listed. You can then run any of the listed entries in the usual way.

If the **Find next match** option is selected, the next matching entry is highlighted in the context of its normal category. To find the next incidence of the previous search text, press **F3** or select the **Repeat Last** option in the **Search** menu at the top of the screen.

## Documents Button



To view documentation about a particular program, highlight the entry you want to view and then click on the **Documents** button. This pops up the author's *readme* or other appropriate file (if provided). To close the document, double-click on the top-left corner of the document, or click on **File>>Exit**.

You may also read an alternative document (file\_id.diz) if an asterisk (\*) appears at the end of the program description. Just double-click on the description and a small text window will appear.

Additional documents and files can be reviewed by selecting **View/Hear Files** from the **Copy/Run** Dialog.

## Run From CD Button



If the selected item includes an executable file, this button allows you to run it straight off the CD without installing it to your hard drive. If the item does not include an executable file, the **View/Hear File** dialog will open when you click on this button. If the selected program cannot be run, viewed or heard from the CD-ROM, this button will be disabled and will appear grayed out.

NOTE: You can also run the program by double-clicking on the program name. However, some selections are not executable and some can only run from a copy. In some cases the **View/Hear Files** dialog will open allowing you to review the files. In other cases the **Copy/Run** dialog will open, allowing you to copy the files.



## Copy/Run Button



This button allows you to copy or install a program to your hard drive. The features of this sub-menu are:

**View Files,**  
**Copy/Install,**  
**File Prompts,**  
**Run From Copy,** and  
**Uninstall.**

NOTE: To select a *Directory to Copy: to* other than the default, click on the ... button at the right end of the field and a directory dialog will open.

NOTE: Changes to the *Directory to Copy to:* and *Group to Copy to:* will be saved when you exit the **Copy/Run** dialog.

### **View Files Button**

This lists all the files present in the selected program. To view or hear a file, select it and press View/Hear or double click on it.

Some files require multimedia drivers to view or hear. For example, AVI files require Video for Windows. If you do not have this installed, you can do so by selecting it from the **F**ile menu. Other files such as FLI and GIF files cannot be viewed directly by the World's Largest Collection. In most cases, one of the Graphics or Multimedia programs will be able to view the desired file.

### **Copy/Install Button**

In most cases this copies the program files and directories to a drive and directory specified in the Copy/Run menu and creates a program group and icon(s) in Windows.

NOTE: Most programs are installed simply by copying files from the CD. However, some programs can only be installed by their own installation utility. In these cases the World's Largest Collection tries to run the provided install/setup program. This has some implications for uninstalling the program later (see **Uninstall**)

### **Run From Copy Button**

Runs program which has already been installed to your hard drive.

Not all entries in the World's Largest Collection can be executed. Some files such as AVI and WAV files can be viewed/heard by selecting **View/Hear**. Others, such as fonts, can be viewed separately using an appropriate program in the collection.

## **Uninstall Button**

Deletes a program which has been previously installed to your hard drive. Make sure the *Directory to Copy to:* and *Group to Copy to:* are actually the directory and program group where the program is located. Both the directory and program group icon will be uninstalled (if found).

NOTE: When you uninstall a program installed by the World's Largest Collection (ie. the program's own install program wasn't used by the World's Largest Collection), a message will ask if you want to delete only the files copied from the CD. If you select **Yes**, only file names and sub-directories matching those on the CD will be deleted. If you select **No**, World's Largest Collection will attempt to delete all files and sub-directories it finds in the Directory to copy to. If the program was installed by its own installation utility, only the later option is available.

**File Prompts Check Box**

Prompts you each time a file on your *Drive to Copy to* is deleted or over-written. It is advisable to have this option checked (X).

## Troubleshooting

1. One of the programs will not run or displays a message that it needs one of the following:

- BWCC.DLL
- VBRUN100.DLL
- VBRUN200.DLL
- VBRUN300.DLL
- A file name ending in .VBX

Solutions:

- a. Try installing **BWCC.DLL** and/or **VBRUN DLL files** from the **File** Menu.
- b. If you are running the program from the CD-ROM, try copying it to your hard drive and running it.
- c. Carefully check any documentation files provided with the program for system or setup requirements. These files can be viewed by selecting **View Files** from the **Copy/Run** dialog.
- d. Look in the directory containing the files for an INSTALL.EXE, SETUP.EXE, or similar program. If such a file is provided, try running it.
- e. Check the documentation files to find a way of contacting the author of the program for further information. You may be requested to register your version of the program before any technical support is provided.

2. I tried to install **BWCC.DLL** or **VBRUN DLL files** but got an error message.

Solutions:

- a. Close any applications that may be using these files (including the Worlds Largest Collection) before attempting to install them again.
- b. Manually copy the files to your Windows directory using DOS or File Manager. These files can be found on *d:\*, where *d* is the drive containing the World's Largest Collection CD-ROM.

3. The World's Largest Collection displays in garish colours and the videos and animation in the *Multimedia* section looked washed out.

Solution:

- a. Upgrade your video driver to one that displays 256 or more colours. You can make the change in Windows Setup if your hardware supports more than 16 colours. If you do not have the driver files, refer to your video hardware supplier.

4. I was installing a program and was switched to another program when I answered *No* to the question *Are you finished with the installation?*

Solution:

- a. The program was being installed by its own setup program, but that setup program was not running when you answered *No*. Just press ALT + TAB to get back to the World's Largest Collection.

5. I was installing a program and received a *Copy not found.* or *Install failed.* message when I answered *Yes* to the question *Are you finished with the installation?*

Solution:

- a. The program was being installed by its own setup program, but that setup program was not finished when you answered *Yes*. Just press ALT + TAB to get back to the setup program and complete the installation.

6. I was running the World's Largest Collection when I got a Windows error message.

Solution:

- a. One of the World's Largest Collection CD-ROMs was probably not in the drive and ready when the error happened. If it occurs repeatedly, even when the CD is in the drive, exit any shareware programs, install

**VBRUN DLL Files** from the **File** menu, then restart the Collection.

b. If the errors persist, try re-installing the World's Largest Collection . If you want to save changes you have made to the *Directory to Copy to:* and *Group to Copy to:* back-up (make copies of) the .ALX files in the *D:\WLC* directory (where *D* is your hard disk drive, and *WLC* is the directory where the Worlds Largest Collection was installed). Then re-install the World's Largest Collection by running *D:\SETUP.EXE* (where *D* is the drive containing the CD-ROM). See the README.TXT file for more information.

7. I started the World's Largest Collection from the icon in my Program Manager but the *Group to Copy to:* and *Directory to Copy to:* were different from what I changed them to previously.

Solution:

a. Make sure your active drive is the drive the World's Largest Collection is installed on before clicking on the icon.

8. I tried to uninstall a program but got messages that some of the files might be *Read Only*. I looked at them with File Manager and they did not have the read-only property.

Solution:

a. The World's Largest Collection cannot delete files that are in use by other programs. Try closing down the program before uninstalling it.

9. I tried to uninstall a program but I received a message that *Some user files or directories were not deleted.* and the directory was still on my hard drive.

Solution:

a. Some programs create files when they are run. When you attempt to uninstall these programs and you answer **Yes** to the message asking if you only want to delete the files copied from the CD-ROM, some files may remain. Try uninstalling again and answering **No**.

10. I tried to listen to some of the .WAV files and nothing happened.

Solutions:

a. Make sure the appropriate volume control is turned up in your mixer/volume application.  
b. If you have **never** heard sound files in your version of Windows, either you do not have a Windows sound card or it has not been set up for Windows. To test whether your sound card is configured properly, you should be able to hear sound when you click on a .WAV file in Control Panel>>Sound>>Test. If you hear nothing, refer to the documentation supplied by the Manufacturer.

11. My version of Windows has become unstable.

Solution:

a. Back-up (make copies of) the AUTOEXEC.BAT, CONFIG.SYS, WIN.INI, SYSTEM.INI, and CONTROL.INI files in your Windows directory, then restore the previous (most recent) backups of these files (from before when the problems occurred). See **Contents**.



